

A comparison of community safety Talkback results Oxford city

Introduction

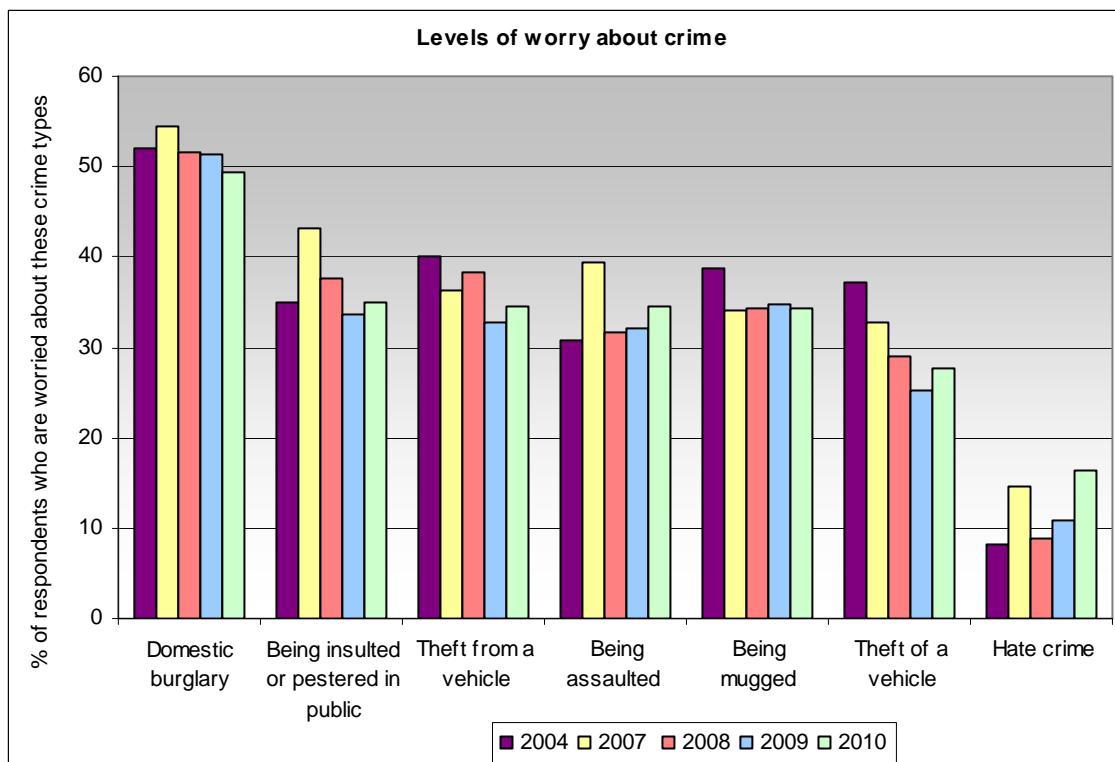
The following document uses results from Oxford's Community Safety Talkback Panel surveys of 2004, 2007, 2008, 2009 and 2010 and compares the responses to the questions.

How worried, if at all, are you about each of the following?

Answered: Very worried or fairly worried (% of respondents)					
	2004	2007	2008	2009	2010
Domestic burglary	52.1	54.5	51.6	51.4	49.3
Being insulted or pestered in public	34.9	43.2	37.6	33.6	34.9
Theft from a vehicle	40.1	36.4	38.2	32.7	34.6
Being assaulted	30.7	39.3	31.7	32.0	34.6
Being mugged	38.8	34.1	34.3	34.8	34.4
Theft of a vehicle	37.2	32.7	28.9	25.2	27.6
Hate crime	8.1	14.7	8.9	10.8	16.3

The shaded yellow cells indicate the top 3 crime concerns for each year

The data above is represented in the following chart:



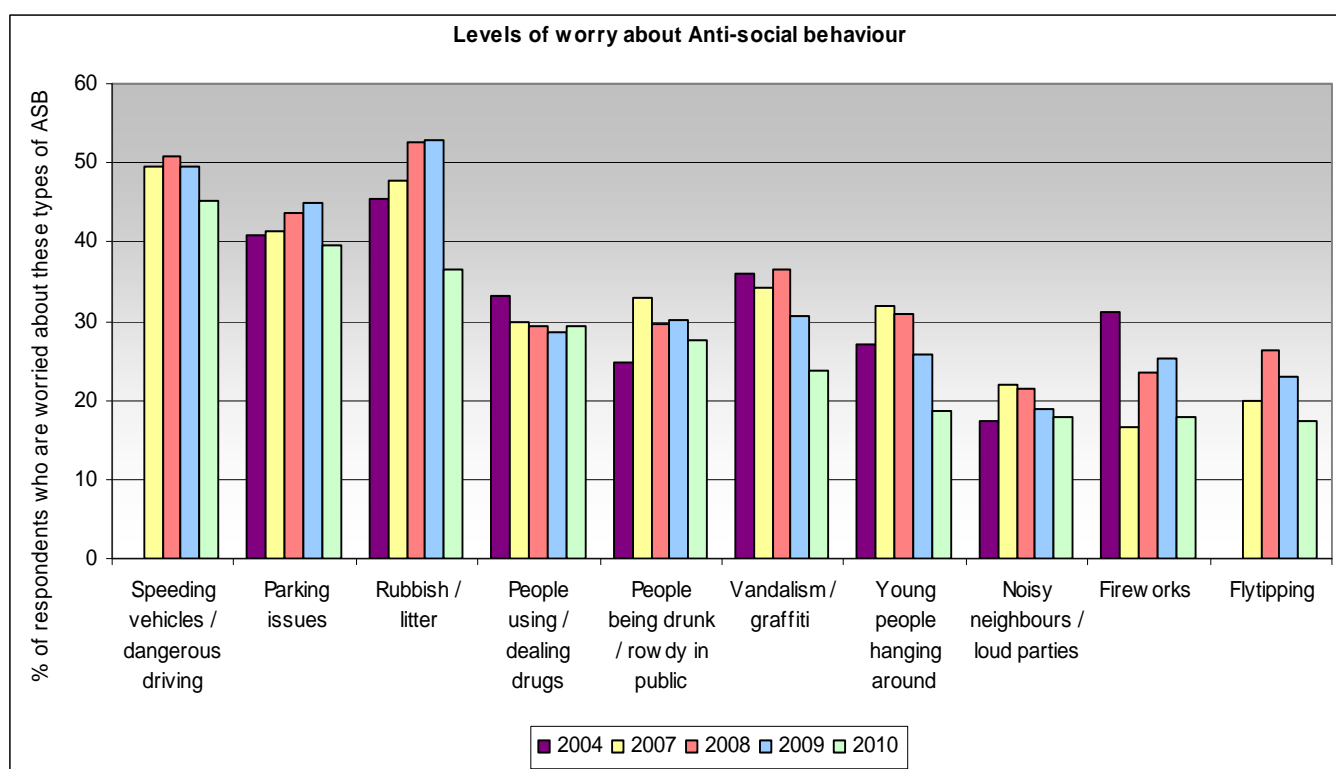
In 2010, Domestic burglary continues to be the crime that worries the greatest number of respondents, but the proportion of people who are worried about it is the lowest it has been during the past four years. Being insulted or pestered in public, theft from a vehicle and being assaulted are also of concern.

A comparison of community safety Talkback results Oxford city

Please tell us if any of the types of antisocial behaviour below are a problem in your area

Answered: A very big problem or a fairly big problem (% of respondents)					
	2004	2007	2008	2009	2010
Speeding vehicles or motorbikes / dangerous driving		49.5	50.7	49.5	45.3
Cars parked inconveniently, dangerously or illegally	40.9	41.3	43.6	45.0	39.7
Rubbish or litter lying around	45.5	47.8	52.5	52.8	36.4
People using or dealing drugs	33.3	29.8	29.3	28.5	29.3
People being drunk or rowdy in public places	24.7	33.0	29.5	30.1	27.7
Vandalism or graffiti	35.9	34.1	36.6	30.6	23.8
Young people hanging around	27.0	31.8	30.8	25.9	18.7
Noisy neighbours or loud parties	17.4	21.9	21.5	18.9	17.9
Fireworks being set off	31.1	16.6	23.6	25.2	17.9
Fly tipping		19.9	26.2	22.9	17.3
People using or carrying airguns or replica guns	3.9	4.2	6.5	4.2	7.9
Abandoned or burnt out cars	17.9	10.3	10.2	7.5	6.5
Conflicts or disputes between neighbours	6.9	8.5	8.5	6.8	5.1

The shaded yellow cells indicate the top 3 ASB concerns for each year



Since 2007, the same three types of Anti-social behaviour have been of the most concern across Oxford; speeding vehicles / dangerous driving, parking issues and rubbish or litter lying around.

A comparison of community safety Talkback results

Oxford city

Do you think that the types of antisocial behaviour below have got better, worse or stayed the same in your area over the last 12 months?

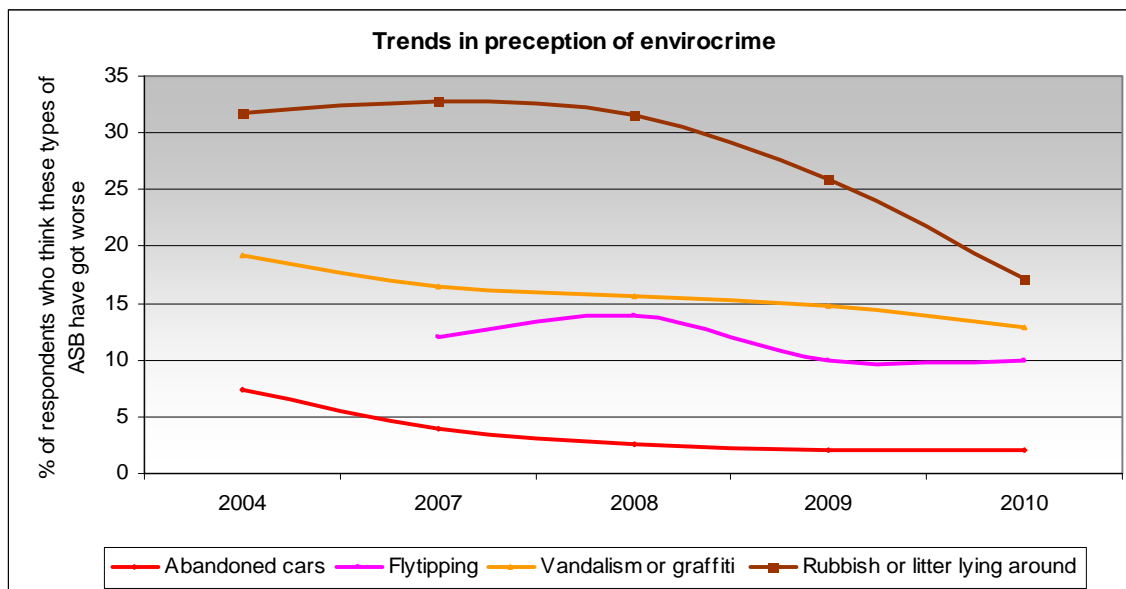
ASB type	Got better (% of respondents)				
	2004	2007	2008	2009	2010
Abandoned or burnt out cars	16.4	16.8	20.0	16.1	11.9
Cars parked inconveniently, dangerously or illegally	6.0	6.0	7.2	5.4	8.2
Conflicts or disputes between neighbours	7.1	7.4	8.9	9.1	8.0
Fireworks being set off	7.1	11.4	12.6	12.6	10.0
Flytipping		4.0	10.2	9.1	7.4
Noisy neighbours or loud parties	10.2	7.9	10.9	9.6	9.4
People being drunk or rowdy in public places	7.9	6.2	11.3	9.6	10.8
People using or carrying airguns or replica guns	2.3	6.9	5.2	4.4	5.8
People using or dealing drugs	5.4	4.4	7.2	4.7	6.3
Rubbish or litter lying around	10.2	8.2	9.5	10.3	11.9
Speeding vehicles or motorbikes / dangerous driving		6.4	6.5	5.8	7.6
Vandalism or graffiti	9.4	5.8	10.6	10.3	8.2
Young people hanging around	6.8	7.9	11.3	8.6	8.6

ASB type	Got worse (% of respondents)				
	2004	2007	2008	2009	2010
Abandoned or burnt out cars	7.3	3.9	2.6	2.1	2.0
Cars parked inconveniently, dangerously or illegally	31.2	28.7	27.1	28.7	24.4
Conflicts or disputes between neighbours	5.4	5.4	4.1	2.1	2.9
Fireworks being set off	24.9	8.3	9.5	8.6	7.7
Flytipping		12.0	13.9	10.0	10.0
Noisy neighbours or loud parties	13.3	10.9	12.1	7.9	4.6
People being drunk or rowdy in public places	14.3	16.4	11.7	12.1	11.1
People using or carrying airguns or replica guns	1.5	0.9	3.2	1.4	2.6
People using or dealing drugs	19.1	14.8	15.0	13.1	10.3
Rubbish or litter lying around	31.8	32.8	31.5	25.9	17.2
Speeding vehicles or motorbikes / dangerous driving		28.4	28.4	26.2	22.6
Vandalism or graffiti	19.3	16.4	15.6	14.7	12.8
Young people hanging around	18.5	15.1	14.8	13.1	9.1

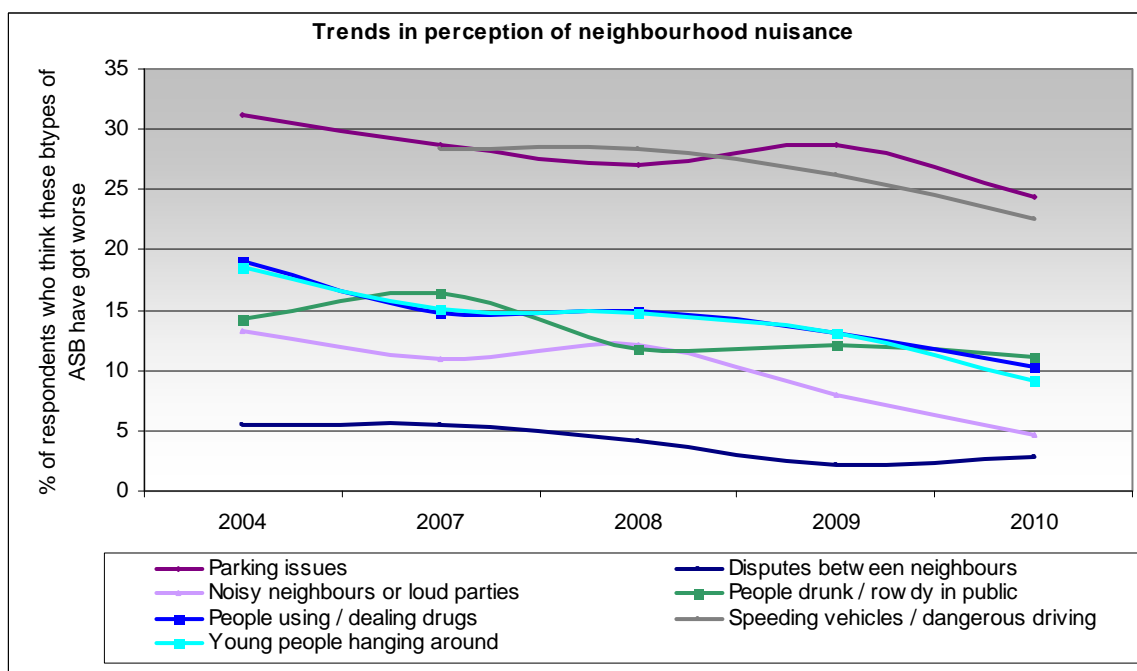
The colour of the text above relates to the colours of the graph lines overleaf

The following graphs represent some of the data above, showing the trends in perceptions of envirocrime and neighbourhood nuisance over the past few years, and the percentage of respondents who think these types of antisocial behaviour issues have got worse in their area:

A comparison of community safety Talkback results Oxford city



Rubbish / litter is considered to be the worst type of envirocrime, as shown by the highest graph line on the graph above. However, the percentage of people who think that rubbish and litter have got worse in their area has decreased in the past year, and this downward trend is also true for the other types of environcrime above.



There have been fluctuations in respondents' perceptions about most of these types of ASB in Oxford over the past few years. All of these types of neighbourhood nuisance – except disputes between neighbours - show a downward trend in 2010, and therefore a decrease in the percentage of respondents who thought they had got worse in the past year.

A comparison of community safety Talkback results Oxford city

Do you know how to contact your Neighbourhood policing team?

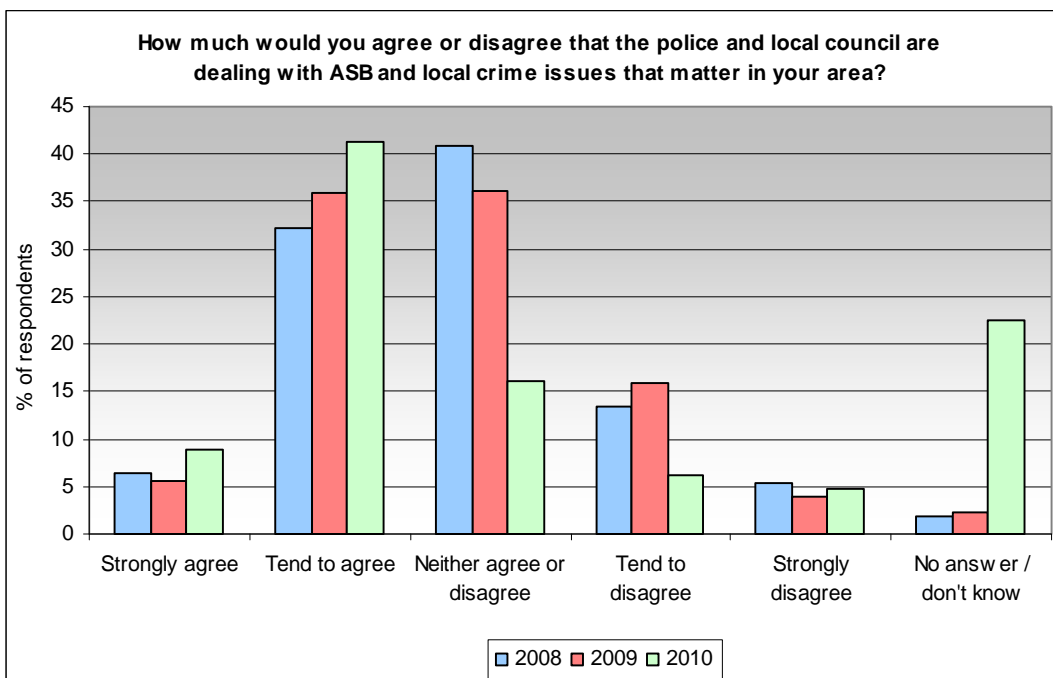
Answered (%)				
	2007	2008	2009	2010
Yes	21.0	32.1	42.5	44.1
No	77.9	66.8	56.3	55.9

At quarterly NAG meetings, community safety issues for your area are discussed and prioritised. Do you know how to find out about your neighbourhood's top 3 priorities?

Answered (%)			
	2008	2009	2010
Yes	9.8	13.3	20.7
No	89.2	85.3	79.3
No answer	0.9	1.4	0.0

These responses shows that the public's awareness of neighbourhood policing, how to contact their local police team and how to find out about their local neighbourhood priorities has increased over the past few years; the proportion of respondents across the city who know how to contact their local police team has more than doubled, from 21.0% in 2007 to 44.1% in 2010. Similarly, the proportion of respondents who know how to find out about their local priorities has increased from 9.8% in 2008 to 20.7% in 2010.

NI21 - How much would you agree or disagree that the police and local council are dealing with antisocial behaviour and crime issues that matter in your area?



NI21 is about partnership working and public confidence in local agencies to tackle the community safety issues that matter to local people. The indicator score is calculated by adding the "strongly agree" and "tend to agree" responses.

This therefore gives the scores for the whole of Oxford as 41.6% in 2009, and 50.2% in 2010, which shows that public confidence has increased in Oxford in the last year.